

**ΣDIMAX Pro**

# Business Networking Product Guide

Elevating Businesses with  
Enhanced Connectivity



Downloadable  
Marketing Resources

# Industrial Specialized Dual PoE Power Budget

Durable & Reliable Connection for Surveillance and SMB Harsh Environments

To provide a stable PoE power supply and reliable network connection, the dual PoE power budget supply, enables the network administrator to adjust the PoE power supply with durability and longer product life cycle to work in the harsh environments.



Wide Temperature Range



Dual PoE Power Supply



Surveillance VLAN



Long Range Mode



PoE PD Alive Check



Dual Firmware



PoE Backfeed Protection



Industrial PoE L2 Managed Switch	IGS-5654PLX	IGS-5428PLC	IGS-5218PLC
Model No.	IGS-5654PLX	IGS-5428PLC	IGS-5218PLC
	Gigabit Ethernet		
Total Port Count	54-Port	28-Port	18-Port
Description	Industrial Surveillance VLAN 54-Port Gigabit PoE+ L2 Managed Switch with 4 10GbE SFP+ Ports	Industrial Surveillance VLAN 28-Port Gigabit PoE+ L2 Managed Switch with 4 Gigabit RJ45/SFP Combo Ports	Industrial Surveillance VLAN 18-Port Gigabit PoE+ L2 Managed Switch with 2 Gigabit RJ45/SFP Combo Ports
Port/Module Slots			
GbE / FE	48 x GbE	24 x GbE	16 x GbE
SFP/SFP+ Slot	6 x 10GbE SFP+	-	-
GbE Combo RJ-45/SFP	-	4	2
PoE Port	48	24	16
Console Port	v	v	-
PoE Power Management			
IEEE 802.3af/at	v	v	v
Power Budget Management UI	v	v	v
PD Alive Check	v	v	v
Overloading Protecting	v	v	v
Power Backfeed Protection	v	v	v
Long Range PoE 200M*	v	v	v
Total PoE Power Budget	Industrial Mode: 400W; Classic Mode: 800W	Industrial Mode: 300W; Classic Mode: 500W	Industrial Mode: 200W; Classic Mode: 360W
Performance			
Switch Capacity / Backplan	216Gbps	56Gbps	36Gbps
Forwarding Rate	160.7Mpps	41.6Mpps	26.7Mpps
MAC Address	32K	8K	8K
Jumbo Frame	12KB	9KB	9KB
Packet Buffer	16Mb	4.1Mb	4.1Mb
Management			
Web-Based	v	v	v
Features			
Surveillance VLAN Auto-Enrollment	v	v	v
IEEE 802.1q VLAN	v	v	v
MTP/RSTP/STP	v	v	v
SNMP v1/v2c/v3	v	v	v
Trunking Group	8	8	8
LACP/Static LAG	v	v	v
QoS/Priority Queues	v	v	v
IGMP Snooping	v	v	v
LLDP, LLDP-MED	v	v	v
Port Mirroring	v	v	v
Loopback Detection	v	v	v
Access Control List (ACL)	v	v	v
Dual Firmware	v	v	v
Voice VLAN	v	v	v
DHCP Snooping	v	v	v
Others	Redundant Dual Power Input	-	-
Operating Temperature	Industrial Mode: -20 ~ 65°C Classic Mode: -20 ~ 40°C	Industrial Mode: -20 ~ 65°C Classic Mode: -20 ~ 40°C	Industrial Mode: -20 ~ 65°C Classic Mode: -20 ~ 40°C
Fan Type	3 x Fans with Intelligent Thermal Controller	2 x Fans	2 x Fans
Power Type	Internal Power	Internal Power	Internal Power
Physical			
Dimension (LxWxH)	441x330x44mm	441x270x44mm	441x196x44mm
Mounting Type	Rack Mount	Rack Mount	Rack Mount

\* Guaranteed PoE long distance to 200 meters.

# Robust Industrial Managed Switch

Durable, Reliable, Flexible & Smart Network for Harsh Environments

Certified to withstand harsh environment and provides reliable network connection, the industrial switch is ideal for industrial networks such as automotive, factory automation, oil and gas, mining, military, transportation, substation, energy and outdoor applications of railways, roads, tunnels, smart cities, city surveillance and traffic monitoring.



**IEC Certified**  
 • Vibration  
 • Shock  
 • Free Fall  
 • EMC & EMS



IGS-5416P, IGS-5408P, IGS-5208



Certified Ruggedized Design



High/Low Temperature Resistance



Reliable Dual Redundancy

Industrial PoE L2 Managed Switch / L2 Managed Switch			
Model No.	IGS-5416P	IGS-5408P	IGS-5208
	Gigabit Ethernet		
Total Port Count	20-Port	12-Port	10-Port
Description	Industrial 16-Port Gigabit PoE+ L2 Managed Switch with 4 SFP Slots	Industrial 8-Port Gigabit PoE+ L2 Managed Switch with 4 SFP Slots	Industrial 8-Port Gigabit L2 Managed Switch with 2 SFP Slots
<b>Hardware</b>			
10/100/1000Base-T	16	8	8
SFP/SFP+ Slot	4 x SFP	4 x SFP	2 x SFP
PoE Port	8	8	-
Console Port	v	v	v
USB Port	1x USB 2.0 storage for firmware update, configuration backup, restore, boot up and system log		
DI/DO	DI x 1, DO x 1	DI x 1, DO x 1	DI x 1, DO x 1
Power Redundancy	Redundant Dual DC 48V-57V	Redundant Dual DC 48V-57V	Redundant Dual DC 12V-48V
Reserve Polarity Protection	v	v	v
Overload Current Protection	v	v	v
Alarm Contact	1A@24VDC	1A@24VDC	1A@24VDC
Housing	Ruggedized aluminum alloy case, IP30-rated		
Operation Temperature Range	-40 ~ 75°C	-40 ~ 75°C	-40 ~ 75°C
MTBF (Mean Time Between Failure)	>100,000 hours	>100,000 hours	>100,000 hours
Fan Type	Fanless	Fanless	Fanless
<b>Performance</b>			
Switching Capacity / Backplane	40Gbps	24Gbps	20Gbps
Forwarding Rate (Max.)	29.76Mpps	17.85Mpps	14.88Mpps
MAC Address	16K	16K	16K
Jumbo Frame	16KB	16KB	16KB
Packet Buffer	12Mb	12Mb	12Mb
<b>PoE Power Management</b>			
Power Budget Management UI	v	v	-
PD Alive Check	v	v	-
PoE Scheduling	v	v	-
Total PoE Power Budget	240W	240W	-
<b>Management</b>			
Web Based Management	v	v	v
Telnet	v	v	v
SNMP (v1/v2c/v3)	v	v	v
<b>Physical</b>			
Dimension (LxWxH)	90.8 x 145 x 113 mm	72.2 x 145 x 113 mm	72.2 x 145 x 113 mm
Mounting Type	DIN-Rail	DIN-Rail	DIN-Rail
<b>Certification &amp; Standard</b>			
Railway, Vibration, Shock, Free-Fall	EN50121-4, IEN-EC60068-2-6, IEC60068-2-27, IEC60068-2-32		
EMC	61000-6-2, 61000-6-4	61000-6-2, 61000-6-4	61000-6-2, 61000-6-4
EMS	IEC61000-4-2 (ESD), IEC61000-4-3 (RS), IEC61000-4-4 (EFT), IEC61000-4-5 (Surge), IEC61000-4-6 (CS), IEC61000-4-8 (Magnetic Field)		
EMI	CE, FCC	CE, FCC	CE, FCC
Standards	IEEE 802.1Q VLAN, IEEE 802.1D STP, IEEE 802.1w RSTP, IEEE 802.1s MSTP, IEEE 802.3ad LACP, IEEE 802.1AB LLDP, ITU-T G.8032/Y.1344 ERPS		

## For Harsh Environments in Industrial IoT (IIoT) and Smart City



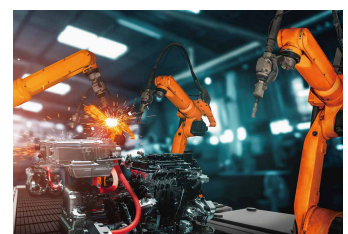
Manufacturing, Automotive



Energy Plant



Transportation, Smart City



Factory Automation



## Robust Industrial Unmanaged Switch

Durable, Reliable & Flexible Network for Harsh Environments

The EDIMAX Industrial DIN-Rail Unmanaged Switch comes with PoE+ Gigabit high-speed connections with IP30-rated, fanless rugged industrial design and rich features. The industrial switches offer easy efficient data transfer, plug-and-play, flexible-deployment, cost-effective, energy-efficient solution for various harsh industrial Networks.



- 6KV Lightning Surge Protection
- Wide Range Temperature
- Long Range Guaranteed 200M
- Reliable Power Redundancy
- QoS Improved Traffic Efficiency
- Flexible DIN-Rail and Wall Mount



IGS-1210P V2, IGS-1105P, IGS-1005

Industrial PoE/Unmanaged Switch			
Model No.	IGS-1210P V2	IGS-1105P	IGS-1005
	Gigabit Ethernet		
Total Port Count	8-Port	5-Port	5-Port
Description	Industrial 10-Port Gigabit PoE+ Switch with 2 SFP Ports	Industrial 5-Port Gigabit PoE+ Switch with 1 SFP Port	Industrial 5-Port Gigabit Switch
<b>Hardware</b>			
10/100/1000Base-T	8	4	5
SFP/SFP+ Slot	2 x SFP	1 x SFP	-
PoE Port (IEEE802.11at/af)	Port 1-8	Port 1-4	-
6 KV Surge Protection	Port 1-8	Port 1-4	Port 1-5
Backbeed Protection	v	v	-
Power Redundancy	Redundant Dual DC 48V-55V	Redundant Dual DC 48V-55V	Redundant Dual DC 12V-48V
P-Fail	v	v	v
Watch Dog	v	-	-
Overload Current Protection	v	v	v
PoE Power Budget	240W	120W	-
Long Range 200 Meters+	v	v	v
Housing	Metal Case, IP30-rated	Metal Case, IP30-rated	Metal Case, IP30-rated
DC IN (48-55V)	v	v	-
Operation Temperature Range	-20 ~ 70°C	-20 ~ 70°C	-20 ~ 70°C
MTBF (Mean Time Between Failure)	>100,000 hours	>100,000 hours	>100,000 hours
Fan Type	Fanless	Fanless	Fanless
<b>Performance</b>			
Switching Capacity/Backplane	20Gbps	10Gbps	10Gbps
Forwarding Rates (Max.)	14.88Mpps	7.44Mpps	7.44Mpps
MAC Address	4K	2K	2K
Jumbo Frame	9KB	9KB	9KB
Packet Buffer	1.5Mb	2Mb	2Mb
QoS (IEEE 802.1p)	v	v	v
<b>Physical</b>			
Dimension (LxWxH)	210 x 45 x 160.6 mm	180 x 32 x 130 mm	127.5 x 30 x 83.6 mm
Mounting Type	DIN-Rail	DIN-Rail	DIN-Rail
<b>Others</b>			
Certification	CE/FCC/BSMI		

## Smartly and Powerfully Upgrade to 2.5GbE PoE++ Networks

For high-speed internet needs, explore Edimax's 2.5G switches. Upgrade to a 2.5GbE network seamlessly without rewiring. Edimax offers reliable L2 managed and web smart switches for stable high-speed data transmission. Designed for system integrators and installers, it supports 802.11bt PoE++ with each port delivering up to 90W power, simplifying installation while ensuring efficiency.



Flexible PoE Deployment



Long Range Mode



PoE PD Alive Check



Voice IP VLAN



DHCP Snooping



Dual Firmware



PoE Backfeed Protection


PE++ L2 / Web Smart Switch			
Model No.	TGS-5428PLX	TGS-3109PLX	TGS-3109XT
Multi-Giga Ethernet			
Total Port Count	28-Port	9-Port	9-Port
Description	Surveillance VLAN 28-Port 2.5GbE L2 Managed PoE++ Switch with 4 10GbE SFP+ Ports	8-Port 2.5GbE Web Smart PoE++ Switch with 10GbE SFP+ Port	8-Port 2.5GbE Web Smart Switch with 10GbE Multi-Gigabit Port
Port/Module Slots			
GbE / FE (RJ45)	-	-	-
2.5GbE Multi-Giga (RJ45) (100M/1G/2.5G)	24 x 2.5GbE	8 x 2.5GbE	8 x 2.5GbE
10GbE Multi-Giga (RJ45) (100M/1G/2.5G/5G/10GbE)	-	-	1 x 10GbE
SFP/SFP+ Slot	4 x 10GbE SFP+	1 x 10GbE SFP+	-
PoE Ports	24	8	-
Console Port	v	-	-
PoE Power Management			
IEEE 802.3af/at/bt PoE (90W/P)	v (90W/P)	v (90W/P)	-
Power Budget Management UI	v	v	-
PD Alive Check	v	-	-
Overloading Protecting	v	v	-
Power Backfeed Protection	v	v	-
Long Range PoE 200M+*	v	v	-
Total PoE Power Budget	400W	240W	-
Performance			
Switching Capacity / Backplane	200Gbps	60Gbps	60Gbps
Forwarding Rate (Max.)	169.28Mpps	44.64Mpps	44.64Mpps
MAC Address	32K	4K	4K
Jumbo Frame	12K	12K	12K
Packet Buffer	16Mb	8.1Mb	8.1Mb
Management			
Web-Based	v	v	v
Features			
Surveillance VLAN Auto-Enrollment	v	-	-
IEEE802.1q VLAN	v	v	v
MSTP/RSTP/STP	v	-	-
SNMP v1/v2c/v3	v	-	-
Port Trunking	v	v	v
LACP/Static LAG	v	v	v
QoS/Priority Queues	v	v	v
IGMP Snooping	v	v	v
LLDP, LLDM-MED	v	-	-
Port Mirroring	v	v	v
Loopback Detection	v	v	v
Access Control List(ACL)	v	-	-
Dual-Firmware	v	-	-
Voice VLAN	v	-	-
DHCP Snooping	v	-	-
TACACS+, RADIUS	v	-	-
Fan Type	3 x Fans with Intelligent Thermal Controller	1 x Fan with Intelligent Thermal Controller	Fanless
Power Type	Internal Power	Internal Power	External Power
Physical			
Dimension (LxWxH)	441x270x44mm	330x230x44mm	240x105x27mm
Mounting Type	Rack Mount	Rack Mount	Wall Mount

\* Guaranteed PoE long distance to 200 meters.

# One-Click Surveillance VLAN Setting & Auto-Enrollment

## Tailor-made Features for Surveillance and SMB

Designed for IP surveillance networks, this switch offers easy device discovery and user authentication through the one-click Surveillance VLAN setting and Auto-Enrollment. Easily setup and configure surveillance networks with ease of mind.

-   
Surveillance VLAN
-   
Long Range Mode
-   
PoE PD Alive Check
-   
Voice IP VLAN
-   
DHCP Snooping
-   
Dual Firmware
-   
PoE Backfeed Protection



PoE L2 Managed Switch				
Model No.	GS-5424PLX V2	GS-5424PLC V3	GS-5216PLC	GS-5210PL
Gigabit Ethernet				
Total Port Count	28-Port	28-Port	18-Port	12-Port
Description	Surveillance VLAN 28-Port Gigabit PoE+ Long Range L2 Managed Switch with 4 10GbE SFP+ Ports	Surveillance VLAN 28-Port Gigabit PoE+ Long Range L2 Managed Switch with 4 Gigabit RJ45/SFP Combo Ports	Surveillance VLAN 18-Port Gigabit PoE+ Long Range L2 Managed Switch with 2 Gigabit RJ45/SFP Combo Ports	Surveillance VLAN 12-Port Gigabit PoE+ Long Range L2 Managed Switch with 2 Gigabit RJ45 Ports and 2 SFP Ports
Port/Module Slots				
GbE / FE	24 x GbE	24 x GbE	16 x GbE	10 x GbE
SFP/SFP+ Slot	4 x 10GbE SFP+	-	-	2 x SFP
GbE Combo RJ-45/SFP	-	4	2	-
PoE Port	24	24	16	8
Console Port	v	v	-	-
PoE Power Management				
IEEE 802.3af/at	v	v	v	v
Power Budget Management UI	v	v	v	v
PD Alive Check	v	v	v	v
Overloading Protecting	v	v	v	v
Power Backfeed Protection	v	v	v	v
Long Range PoE 200M*	v	v	v	v
Total PoE Power Budget	400W	400W	280W	110W
Performance				
Switching Capacity / Backplane	128Gbps	56Gbps	36Gbps	24Gbps
Forwarding Rate (Max.)	95.2Mpps	41.6Mpps	26.7Mpps	17.8Mpps
MAC Address	16K	8K	8K	8K
Jumbo Frame	12KB	9KB	9KB	9KB
Packet Buffer	12Mb	4.1Mb	4.1Mb	4.1Mb
Management				
Web-Based	v	v	v	v
Features				
Surveillance VLAN Auto-Enrollment	v	v	v	v
IEEE 802.1q VLAN	v	v	v	v
MTP/RSTP/STP	v	v	v	v
SNMP v1/v2c/v3	v	v	v	v
Trunking Group	8	8	8	8
LACP/Static LAG	v	v	v	v
QoS/Priority Queues	v	v	v	v
IGMP Snooping	v	v	v	v
LLDP, LLDP-MED	v	v	v	v
Port Mirroring	v	v	v	v
Loopback Detection	v	v	v	v
Access Control List (ACL)	v	v	v	v
Dual Firmware	v	v	v	v
Voice VLAN	v	v	v	v
DHCP Snooping	v	v	v	v
TACACS+, RADIUS	v	v	v	v
Others	Power Saving with Intelligent Thermal Control	Power Saving with Intelligent Thermal Control	4-digit LED display for PoE power status	4-digit LED display for PoE power status
Fan Type	2 x Fans with Intelligent Thermal Controller	2 x Fans with Intelligent Thermal Controller	1 x Fan with hot-swappable fan tray	Fanless
Power Type	Internal Power	Internal Power	Internal Power	Internal Power
Physical				
Dimension (LxWxH)	441x270x44mm	441x270x44mm	441x196x44mm	330x230x44mm
Mounting Type	Rack Mount	Rack Mount	Rack Mount	Rack Mount

\* Guaranteed PoE long distance to 200 meters.

# Simplify the Management. Optimize the Connection

## Functionality, Security and Manageability at a Low Cost with Great Value

The EDIMAX Pro Web Smart Managed Switches goes beyond plug-and-play connectivity, offering convenient of full management capabilities and security features that effortlessly fits into sophisticated IT systems.



Long Range Mode



PoE PD Alive Check



Voice IP VLAN



DHCP Snooping



Dual Firmware



PoE Backfeed Protection



10 GbE



PoE L2 Managed / Web Smart Switch

Model No.	GS-5654PLX V2	GS-5208PLG V2	GS-5210PLG	GS-3008P	GS-3005P
Gigabit Ethernet					
Total Port Count	54-Port	10-Port	10-Port	8-Port	5-Port
Description	Long Range 54-Port Gigabit PoE+ L2 Managed Switch with 6 SFP + 10 Gigabit Ports	Long Range 8-Port Gigabit PoE+ Web Smart Switch with 2 SFP Ports	Long Range 10-Port Gigabit PoE+ Web Smart Switch with 1 SFP Port	Long Range 8-Port Gigabit PoE+ Web Smart Switch with 4 PoE+ Ports	Long Range 5-Port Gigabit PoE+ Web Smart Switch with 4 PoE+ Ports
Port/Module Slots					
GbE / FE	48 x GbE	8 x GbE	9 x GbE	8 x GbE	5 x GbE
SFP/SFP+ Slot	6 x 10GbE SFP+	2 x SFP	1 x SFP	-	-
1000Base Combo RJ-45/SFP	-	-	-	-	-
PoE Port	48	8	8	4	4
Console Port	v	-	-	-	-
PoE Power Management					
IEEE 802.3af/at	v	v	v	v	v
Power Budget Management UI	v	v	v	v	v
PD Alive Check	v	-	-	-	-
Overloading Protecting	v	v	v	v	v
Power Backfeed Protection	v	v	v	v	v
Long Range PoE 200M*	v	v	v	v	v
Total PoE Power Budget	400W	85W	100W	60W	60W
Performance					
Switching Capacity / Backplane	216Gbps	20Gbps	20Gbps	16Gbps	10Gbps
Forwarding Rate (Max.)	160.7Mpps	14.8Mpps	14.8Mpps	11.9Mpps	7.4Mpps
MAC Address	32K	4K	4K	4K	4K
Jumbo Frame	12K	9.2K	9.2K	9K	9K
Packet Buffer	16M	1.5M	1.5M	1.5M	1M
Management					
Web-Based	v	v	v	v	v
Features					
IEEE 802.1q VLAN	v	v	v	v	v
IEEE 802.1d/w STP/RSTP	v	-	-	-	-
SNMP v1/v2c/v3	v	-	-	-	-
Trunking Group	8	8	8	1	1
LACP	v	v	v	v	v
QoS/Priority Queues	v	v	v	v	v
IGMP Snooping	v	v	v	v	v
Storm Control	v	v	v	v	v
Port Mirroring	v	v	v	v	v
Loopback Detection	v	v	v	v	v
Access Control List (ACL)	v	-	-	-	-
Dual Firmware	v	-	-	-	-
Voice VLAN	v	-	-	-	-
DHCP Snooping	v	-	-	-	-
LLDP, LLDP-MED	v	-	-	-	-
Fan Type	4 x Fans with Intelligent Thermal Controller	Fanless	Fanless	Fanless	Fanless
Power Type	Internal Power	Internal Power	Internal Power	External Power	External Power
Physical					
Dimension (LxWxH)	441x330x44mm	265x184x44mm	265x184x44mm	240x105x26mm	193x84x26mm
Mounting Type	Rack Mount	Rack Mount	Rack Mount	Wall Mount	Wall Mount

\* Guaranteed PoE long distance to 200 meters.

# Guaranteed PoE Long Distance to 200 Meters

## Long Range Flexible PoE Deployment, Exceptional for IP Surveillance Solution

The EDIMAX dedicated long range PoE switches supports PoE-enabled devices, saving more money by reducing power cable deployment costs, in addition with easy hardware DIP switches that can further setup port-based VLAN (port isolation) and QoS.



Guarantee PoE Distance 200M



Easy Hardware QoS



Innovative Port-Based VLAN



Flexible PoE Deployment



PoE Unmanaged Switch			
Model No.	GS-1008P V2 / GS-1008PL V2	GS-1105PE <span style="color:red">new</span>	ES-1008P V2
	Gigabit Ethernet		Fast Ethernet
Total Port Count	8-Port	5-Port	8-Port
Description	8-Port Gigabit PoE+ Switch with DIP Switch	5-Port Gigabit PoE+ Switch with DIP Switch	8-Port Fast Ethernet PoE+ Switch with DIP Switch
Port/Module Slots			
GbE / FE	8 x GbE	5 x GbE	8 x FE
PoE Port	8	4	8
PoE Features			
PoE Port(IEEE802.11at/af)	v	v	v
PD Classification	v	v	v
Overloading Protecting	v	v	v
Long Range PoE Extend Mode	v (DIP Switch)	v (DIP Switch)	v (DIP Switch)
Total PoE Power Budget	130W / 70W	60W	130W
Performance			
MAC Address	4K	2K	1K
Jumbo Frame	9K	9KB	-
Packet Buffer	1.5M	1M	448K
Features			
IEEE 802.1q VLAN	v (DIP Switch)	v (DIP Switch)	v (DIP Switch)
IEEE 802.3az Energy Efficient Ethernet	v	v	v
QoS	v (DIP Switch)	v (DIP Switch)	v (DIP Switch)
Long Range PoE 200M*	v (DIP Switch)	v (DIP Switch)	v (DIP Switch)
Fan Type	Fanless	Fanless	Fanless
Power Type	Internal Power	External Power	Internal Power
Physical			
Dimension (LxWxH)	265x184x44mm	121x75x26mm	265x184x44mm
Mounting Type	Rack Mount	Wall Mount	Rack Mount

\* Guaranteed PoE long distance to 200 meters.

Unmanaged Switch			
Model No.	GS-1005BE <span style="color:red">2.5 GbE</span>	GS-1026 V3	GS-1024 / GS-1016 V2
	2.5 Gigabit	Gigabit Ethernet	
Total Port Count	5-Port	26-Port	24-Port / 16-Port
Description	5-Port 2.5GbE Switch	24-Port Gigabit Switch with 2 SFP Ports	24-port / 16-Port Gigabit Switch
Port/Module Slots			
GbE / FE	5 x 2.5GbE	24 x GbE	24 / 16 x GbE
SFP/SFP+ Slot	-	2 x SFP	-
Performance			
Packet Buffer, bit	12M	4.1M	4.1M
MAC Address	16K	8K	8K
Jumbo Frame, Bytes	12K	10K	10K
Features			
IEEE 802.3az Energy Efficient Ethernet	v	v	v
Fan Type	Fanless	Fanless	Fanless
Power Type	External Power	Internal Power	Internal Power
Physical			
Dimension (LxWxH)	160x110x26mm	441x131x44mm	268x160x42mm 215x133x42mm
Mounting Type	Wall Mount	Rack Mount	Rack Mount / Wall Mount

L2 Managed / Web Smart Switch				
Model No.	FS-5428X <span style="color:red">new</span>	GS-5654LX / GS-5424 LX <span style="color:red">10 GbE</span>	GS-5424G <span style="color:red">10 GbE</span>	GS-5008E
	Gigabit Ethernet			
Total Port Count	28-Port	54-Port / 24-Port	28-Port	8-Port
Description	28-Port Gigabit SFP L2+ Managed Switch with 4 10GbE SFP+ Ports	54-Port / 24-Port Gigabit L2 Managed Switch with 6 / 4 10GbE SFP+ Ports	24-Port Gigabit L2 Managed Switch with 4 SFP Ports	8-Port Gigabit Web Smart Switch
Port/Module Slots				
GbE / FE	-	48 / 24 x GbE	24 x GbE	8 x GbE
SFP/SFP+ Slot	24xSFP&4x10GbESFP+	6 / 4 x 10GbE SFP+	4 x SFP	-
Performance				
MAC Address	32K	32K / 16K	8K	4K
Jumbo Frame	12K	12K	9K	9K
Packet Buffer	16M	16M / 12M	4.1M	1.53M
Management				
Web-Based	v	v	v	v
Features				
IEEE 802.1q VLAN	v	v	v	v
6KV Surge Protection	-	v	v	-
Trunking Group	8	8	8	8
QoS	v	v	v	v
IGMP Snooping	v	v	v	v
STP/RSTP/MSTP	v	v	v	-
Static Route, Inter VLAN	v	-	-	-
Fan Type	3 x Fans with Intelligent Thermal Controller	3 x Fans with Intelligent Thermal Controller/Fanless	Fanless	Fanless
Power Type	Internal Power	Internal Power	Internal Power	External Power
Physical				
Dimension (LxWxH)	441 x 270 x 44mm	441x270x44mm 441x198x44mm	440x220x44mm	155x85x26mm
Mounting Type	Rack Mount	Rack Mount	Rack Mount	Wall Mount

Accessories				
Model No.	GP-203IT / GP-201IT <span style="color:red">2.5 GbE</span>	GP-103IT / GP-102IT	GP-101IT	
	PoE Injector			
Description	IEEE 802.3bt 2.5GbE PoE++ Injector, up to 90W/30W Metal Case, Wall-Mount	IEEE 802.3bt Gigabit PoE++ Injector, up to 90W/60W Metal Case, Wall-Mount	IEEE 802.3at Gigabit PoE+ Injector, up to 30W, Wall-Mount	
Model No.	GP-101ET	GP-101ST	MG-10G / MG-1000 Series	EA1 Series
Description	PoE Extender	PoE Splitter	SFP Transceiver	SFP+ DAC Cable
	IEEE 802.3at Gigabit PoE+ Extender	IEEE 802.3at Gigabit PoE+ Splitter	10GbE or 1GbE SFP+/SFP Modules	10GbE SFP+ Direct Attach Cable
Model No.	EN-9320SFP+ V2	EN-9320TX-E V2	EN-9225TX-E	
Description	10 Gigabit Ethernet SFP+ PCI Express Server Adapter	10 Gigabit Ethernet PCI Express Server Adapter	2.5 Gigabit Ethernet PCI Express Server Adapter	



# Elevate Your Connectivity with 5G/ 4G Mobile Wi-Fi CPE

Experience high-performance and robust mobile internet connectivity with Edimax's 5G/4G Mobile WiFi CPE solution. Say goodbye to traditional cable or DSL connections as you connect your devices to the web effortlessly. By harnessing the power of Qualcomm® 5G NR/4G LTE Solution, Edimax transforms 5G NR/4G LTE networks into private signals, offering you maximum flexibility, scalability, and security.



High Flexibility



Comprehensive 5G support



Reliable 5G for Mobility



Industrial Grade (-20°C~70°C)



DIN-Rail Mount



Qualcomm® Solution



Dual-SIM Card



new



new



new



new

5G/ 4G CPE		D5G-8459	D4G-7459AC	5G-8649AX	4G-7449AC
Model No.		D5G-8459	D4G-7459AC	5G-8649AX	4G-7449AC
Description		Industrial Grade		Commercial Grade	
		Industrial 5G NR DIN Rail Router	Industrial 4G LTE Wi-Fi 5 AC1200 DIN Rail Router	5G NR Wi-Fi 6 AX1800 Router	4G LTE Wi-Fi 5 AC1200 Router
Hardware					
Interface		1 × GbE WAN/ LAN Port 4 × GbE LAN Ports 1 × Standard SIM Card Slot	1 × FE WAN/ LAN Port 4 × FE LAN Ports 1 × Standard SIM Card Slot	1 × GbE WAN/ LAN Port 3 × GbE LAN Ports 2 × Standard SIM Card Slots	1 × FE WAN/ LAN Port 3 × FE LAN Ports 2 × Standard SIM Card Slots
Antenna		4 × External High Gain Antennas (Detachable, SMA Connector)	4 × External High Gain Antennas (Detachable, SMA Connector)	6 × External High Gain Antennas	4 × External High Gain Antennas
Power Input		• DC12V / 1.5A Power Adpater • DC 5~36V, 2-Pin Terminal Block Connector	• DC12V / 1A Power Adpater • DC 5~36V, 2-Pin Terminal Block Connector	DC12V /1.5A	DC12V /1A
Cellular					
Bands	5G NR Sub-6 NSA (Non-Standalone)	Bands n1, n2, n3, n5, n7, n8, n12, n13, n14, n18, n20, n25, n26, n28, n29, n30, n38, n40, n41, n48, n66, n70, n71, n75, n76, n77, n78, n79	-	Bands n1, n2, n3, n5, n7, n8, n12, n13, n14, n18, n20, n25, n26, n28, n29, n30, n38, n40, n41, n48, n66, n70, n71, n75, n76, n77, n78, n79	-
	5G NR Sub-6 NSA (Non-Standalone)	Bands n1, n2, n3, n5, n7, n8, n12, n13, n14, n18, n20, n25, n26, n28, n29, n30, n38, n40, n41, n48, n66, n70, n71, n75, n76, n77, n78, n79	-	Bands n1, n2, n3, n5, n7, n8, n12, n13, n14, n18, n20, n25, n26, n28, n29, n30, n38, n40, n41, n48, n66, n70, n71, n75, n76, n77, n78, n79	-
	LTE FDD	Bands B1, B2, B3, B4, B5, B7, B8, B12, B13, B14, B17, B18, B19, B20, B25, B26, B28, B29, B30, B32, B66, B71	Bands B1, B2, B3, B7, B8, B20, B28A	Bands B1, B2, B3, B4, B5, B7, B8, B12, B13, B14, B17, B18, B19, B20, B25, B26, B28, B29, B30, B32, B66, B71	Bands B1, B2, B3, B7, B8, B20, B28A
	LTE FDD	Bands B34, B38, B39, B40, B41, B42, B43, B48	Bands B34, B38, B40, B41	Bands B34, B38, B39, B40, B41, B42, B43, B48	Bands B34, B38, B40, B41
	LTE LAA (Licensed Assisted Access)	Band B46	-	Band B46	-
WCDMA	Bands B1, B2, B4, B5, B8, B19	Bands B1, B8	Bands B1, B2, B4, B5, B8, B19	Bands B1, B8	
PHY Data Rate (Max.)	5G SA Sub-6	Download: 2.4Gbps Upload: 900Mbps	-	Download: 2.4Gbps Upload: 900Mbps	-
	5G NSA Sub-6	Download: 3.4Gbps Upload: 550Mbps	-	Download: 3.4Gbps Upload: 550Mbps	-
	LTE Max.	Download: 1.6Gbps Upload: 200Mbps	Download: 150Mbps Upload: 50Mbps	Download: 1.6Gbps Upload: 200Mbps	Download: 150Mbps Upload: 50Mbps
	WCDMA	Download: 42Mbps Upload: 5.76Mbps	Download: 384Kbps Upload: 384Kbps	Download: 42Mbps Upload: 5.76Mbps	Download: 384Kbps Upload: 384Kbps
Wi-Fi					
Standards		-	802.11ac	802.11ax	802.11ac
Max. Theoretical Throughput		-	5GHz: 867Mbps 2.4GHz: 300Mbps	5GHz: 1201Mbps 2.4GHz: 574Mbps	5GHz: 867Mbps 2.4GHz: 300Mbps
Concurrent Clients		-	Up to 64 Clients per Radio	Up to 100 Clients per Radio	Up to 64 Clients per Radio
Features					
Easy Mesh		-	-	✓	-
Black List and White List		-	✓	✓	✓
VPN Client		Supported L2TP and PPTP	Supported L2TP and PPTP	Supported L2TP and PPTP	Supported L2TP and PPTP
User Isolation		-	✓	✓	✓
Intelligent Load Balance		-	-	✓	-
Auto Channel Adjustment		-	✓	✓	✓
Scheduling Restart		✓	✓	✓	✓
Remote SSH Control		✓	✓	✓	✓
Satellite-based Positioning		-	GPS/ Galileo/ Beidou/ GLONASS	-	GPS/ Galileo/ Beidou/ GLONASS
Port Mapping		✓	✓	✓	✓
Intelligent Power Saving		Qualcomm® 5G PowerSave 2.0	-	Qualcomm® 5G PowerSave 2.0	-
Operating Temperature		-20°C~70°C	-20°C~70°C	-10°C~45°C	-10°C~45°C
Physical					
Dimension (LxWxH)		135x103x29mm	135 x 103 x 29mm	230 x 148 x 28mm	230 x 148 x 28mm
Mounting Type		DIN-Rail Mount/ Wall Mount	DIN-Rail Mount/ Wall Mount	Wall Mount/ Desktop	Wall Mount/ Desktop

# Superior High-Speed & Performance Wi-Fi System



AX1800 Wi-Fi 6, Pre-Configured Easy Setup, Expandable Wi-Fi

The PrimeAX 1-2-3 Wi-Fi system comes with the IEEE 802.11ax Wi-Fi 6 technology for wireless speeds up to 1800Mbps (574Mbps at 2.4GHz and 1201Mbps at 5GHz). Expect enterprise-grade performance and build quality, combined with user-friendly operation, easy deployment, super-fast wireless speed, an extensive feature set and a practical, ceiling-mount design make an ideal dual-band solution for enterprise environments.



The PrimeAX 1-2-3 2-pack kit equipped with pre-configured Master and Slave AX1800 APs achieves seamless Wi-Fi coverage and eliminates Wi-Fi dead zones. The built-in smart wizard makes network setup a breeze, you can easily configure and find your paired devices via the Device Discovery Tool which also includes security features (WPA/WPA2/WPA3 and more). What's more, the PrimeAX 1-2-3 featured AX technology such as BSS coloring, DL/UL OFDMA, DL/UL MU-MIMO, TWT (provides improvements in throughput), multi-device support, and Wi-Fi spectrum efficiency for streaming, gaming, media sharing, increases battery life efficiency for devices and reduce power consumption.

## Ordering Information:

### 2-pack:

PrimeAX 1-2-3 (Master) & PrimeAX 1-2-3 (Slave)

### 1-pack:

PrimeAX +1



## Smart and Easy Setup!



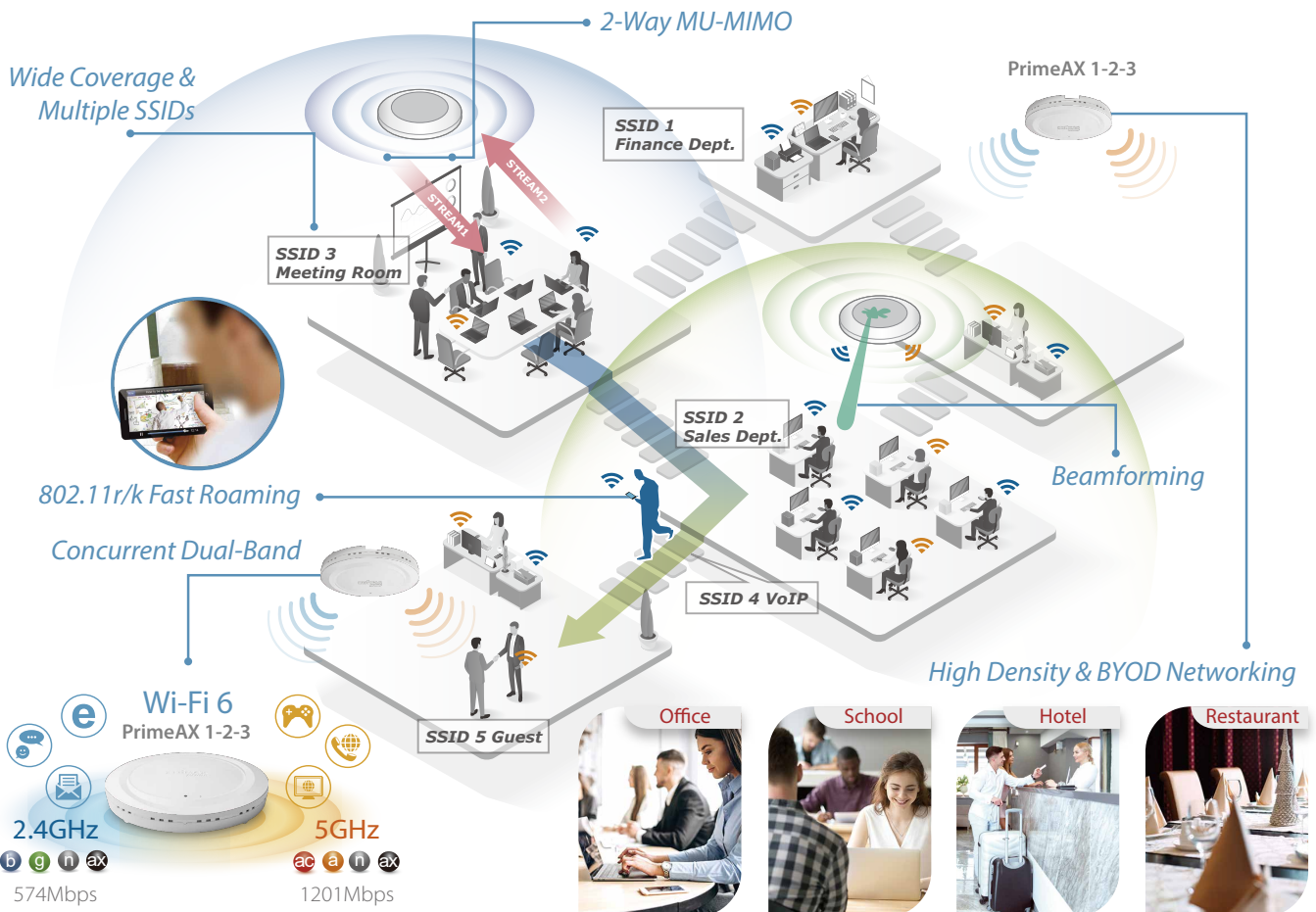
1. Power on the PrimeAX 1-2-3 APs and connect the APs to the existing network switch. (APs can be powered on by PoE)
2. Access the Smart Wizard with a web browser. (Dedicated IP address listed on the label.)
3. Follow the Smart Wizard instructions to configure the Wi-Fi networks in just a few steps

## 802.11AX Technology Features and Benefits

More Capacity	Fastest Speed	Further Range	Better Efficiency	Power Saving	Reduced Interference	Pre-Configured	Smart Wizard

## Expandable Wi-Fi System

PrimeAX 1-2-3 includes 2 APs and is expandable with PrimeAX +1 Add-on AP, up to a total of 16 APs.



# Smart, Secure and Self-Managed Wi-Fi

Easy, Complete, Expandable Office Wi-Fi System for Business and Home from Indoor to Outdoor

The Office 1-2-3 Office Wi-Fi System starter kit comes with three pre-configured access points that can communicate between themselves with self-managed functions for easy setup. The system is expandable with CAP1300 Office +1 (indoor ceiling-mount)/OAP1300 Office +1 (outdoor) Add-on AP, up to a total of 16 APs with zero configuration\*. Built-in with the AP management software, no need for server or controller software and no extra license fee.

\* Zero configuration: Once the Office 1-2-3 Master AP had been installed, the slave APs or add-on APs are automatically configured with master AP while connected to the existing network.

**OFFICE 1-2-3**



## Easy Setup!

Get Your Office Wi-Fi Up and Running in Minutes!

1



Connect the Office 1-2-3 / Office +1 APs to the existing network via switch. (APs can be powered on by PoE)

2



Download the IP Finder utility and the system will find the Office 1-2-3 APs automatically.

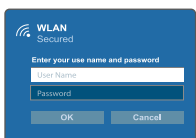
3



Follow the wizard instructions of web- and icon-based UI and easily configure the Wi-Fi network in just a few steps.

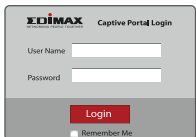
Secured, Separated 3 Wi-Fi Networks

Expandable Indoor & Outdoor Wi-Fi System up to 16 APs



### Office Network

Each employee has his/ her own Wi-Fi access account and password.



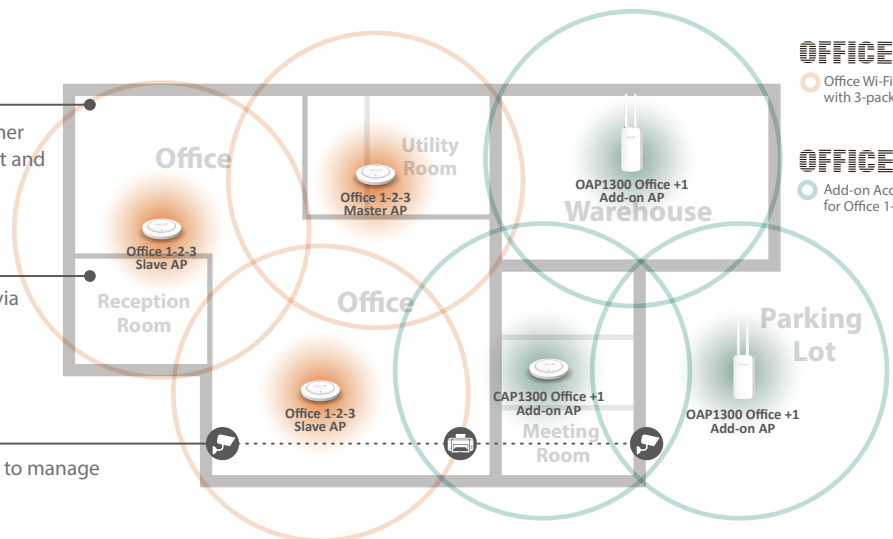
### Guest Network

Login to guest network via captive portal and SMS authentication.

Device Name	MAC Address
IPCAM1	00:34:45:66:1A:01
IPCAM2	00:34:45:66:1A:02
IPCAM3	00:34:45:66:1A:03
Printer1	00:34:45:66:1A:04
Printer2	00:34:45:66:1A:05

### Device Network

Access Control List (ACL) to manage wireless equipments.



**OFFICE 1-2-3**

Office Wi-Fi System with 3-pack Access Point

**OFFICE +1**

Add-on Access Point for Office 1-2-3

## Dedicated Office Wi-Fi System for SMBs

Suitable for a wide range of office spaces such as the working area, meeting room, open space, lobby, warehouse, parking lot and others from indoor to outdoor as well as the home office and large house.



### Ordering Information:

**Office 1-2-3 & Office +1 Product Family**

Office 1-2-3 Wi-Fi System, 3-Pack



Office 1-2-3 Master AP

CAP1300 Office +1 Indoor Add-on AP



OAP1300 Office +1 Outdoor Add-on AP



# Exceptional Business Wi-Fi. Always Stays Connected

## Easy Deployment, Built for Professional Heavy Users

A series of business grade EDIMAX Pro Access Points allows businesses to build a reliable, cost-effective wireless network that goes from indoors to outdoors and long range Wi-Fi connectivity. The EDIMAX Pro Wi-Fi drives progress, maintain employee productivity and customer satisfaction.



High Speed & Efficiency



Wide Coverage



Reliable Connection



High Density for BYOD



Secure Access



Free & Flexible Management



### Indoor Access Point

Model No.	CAX1800	CAP1750	CAP1300	CAP1200	CAP300	IAP1200
	Ceiling Mount					In-Wall
Description	2x2 AX Dual-Band Ceiling Mount PoE	3x3 AC Dual-Band Ceiling Mount PoE	2x2 AC Wave 2 Dual-Band Ceiling Mount PoE	2x2 AC Dual-Band Ceiling Mount PoE	2x2 N Ceiling Mount PoE	2x2 AC Dual-Band In-Wall PoE
WiFi Standards	802.11 a/b/g/n/ac/ax	802.11 a/b/g/n/ac	802.11 a/b/g/n/ac	802.11 a/b/g/n/ac	802.11b/g/n	802.11 a/b/g/n/ac
Antenna	Type: 2 x Built-In PIFA (2 Dual-Band) Gain: 2.2dBi (2.4GHz), 2.9dBi (5GHz) Max.	Type: 6 x Built-In PIFA (3 x 2.4GHz, 3 x 5GHz) Gain: 4dBi (2.4GHz), 5dBi (5GHz) Max.	Type: 4 x Built-In PIFA (2 x 2.4GHz, 2 x 5GHz) Gain: 4dBi (2.4GHz), 5dBi (5GHz) Max.	Type: 4 x Built-In PIFA (2 x 2.4GHz, 2 x 5GHz) Gain: 2.82dBi (2.4GHz), 4dBi (5GHz) Max.	Type: 2 x Built-In PIFA Gain: 2.82dBi Max.	Type: 2 x Built-In PIFA (2 Dual-Band) Gain: 2.14dBi (2.4GHz), 3.8dBi (5GHz) Max.
Maximum Theoretical Throughput	5GHz: 1201Mbps 2.4GHz: 574Mbps	5GHz: 1300Mbps 2.4GHz: 450Mbps	5GHz: 867Mbps 2.4GHz: 400Mbps	5GHz: 867Mbps 2.4GHz: 300Mbps	2.4GHz: 300Mbps	5GHz: 867Mbps 2.4GHz: 300Mbps
LAN Interface	GbE x 1	GbE x 1	GbE x 2	GbE x 1	GbE x 1	GbE x 2
Power Input	PoE 802.3at/af; DC12V/1A	PoE 802.3at/af; DC12V/2A	PoE 802.3at/af; DC12V/1A	PoE 802.3at/af; DC12V/1A	PoE 802.3at/af; DC12V/1A	PoE 802.3at/af
Power Consumption (Max.)	12W	19.5W (with USB port)	11W	11W	6.5W	8W
No. of SSID	16+16	16+16	16+16	16+16	16	16+16
Concurrent Clients	2.4GHz:100; 5GHz:100	2.4GHz:50; 5GHz:50	2.4GHz:100; 5GHz:100	2.4GHz:50; 5GHz:50	2.4GHz:50	2.4GHz:50; 5GHz:50
802.11 r /k Roaming	v	v	v	v (only 5G)	-	-
Beamforming / AirTime Fairness	v	-	v	-	-	-
Mode	<ul style="list-style-type: none"> <li>Standalone AP mode</li> <li>Master AP mode: Manage 16 APs</li> <li>Managed AP mode: Be managed by CAP/WAP series /OAP1750 Master AP with NMS &amp; APC500</li> </ul>	<ul style="list-style-type: none"> <li>Standalone AP mode</li> <li>Master AP mode: Manage 16 APs</li> <li>Managed AP mode: Be managed by CAP/WAP series /OAP1750 Master AP with NMS &amp; APC500</li> </ul>	<ul style="list-style-type: none"> <li>Standalone AP mode</li> <li>Master AP mode: Manage 16 APs</li> <li>Managed AP mode: Be managed by CAP/WAP series /OAP1750 Master AP with NMS &amp; APC500</li> </ul>	<ul style="list-style-type: none"> <li>Standalone AP mode</li> <li>Master AP mode: Manage 8 APs</li> <li>Managed AP mode: Be managed by CAP/WAP series /OAP1750 Master AP with NMS</li> </ul>	<ul style="list-style-type: none"> <li>Standalone AP mode</li> <li>Master AP mode: Manage 8 APs</li> <li>Managed AP mode: Be managed by CAP/WAP series /OAP1750 Master AP with NMS</li> </ul>	<ul style="list-style-type: none"> <li>Standalone AP mode</li> <li>Managed AP mode: Be managed by CAP/WAP series /OAP1750 Master AP with NMS &amp; APC500</li> <li>For hotel / apartment building deployment</li> </ul>



### Indoor and Outdoor Access Point

Model No.	WAP1750	OAP1750	OAP1300	OAP1300 V2	OAP900
	Wall Mount		Outdoor Pole-Mount		
Description	3x3 AC Dual-Band Wall Mount PoE	3x3 AC Dual-Band Outdoor PoE	2x2 AC Wave 2 Dual-Band Outdoor PoE	2x2 AC Wave 2 Dual-Band Outdoor PoE	2x2 AC 5GHz Outdoor PoE
WiFi Standards	802.11 a/b/g/n/ac	802.11 a/b/g/n/ac	802.11 a/b/g/n/ac	802.11 a/b/g/n/ac	802.11 a/n/ac
Antenna	Type: 3 x External Gain: 2dBi (2.4GHz), 2dBi (5GHz)	Type: 6 x External (3 x 2.4GHz, 3 x 5GHz) Gain: 4.38dBi (2.4GHz), 5.34dBi (5GHz) Max.	Type: 2 x External Gain: 3.9dBi (2.4GHz), 4.4dBi (5GHz)	Type: 2 x Built-in Omni (2 x Dual-Band) Gain: 5dBi (2.4GHz), 14dBi (5GHz)	Type: 2 x Internal Patch Gain: 15dBi (5GHz) 2 x SMA Connectors for External Ant.
Maximum Theoretical Throughput	5GHz: 1300Mbps 2.4GHz: 450Mbps	5GHz: 1300Mbps 2.4GHz: 450Mbps	5GHz: 867Mbps 2.4GHz: 400Mbps	5GHz: 867Mbps 2.4GHz: 400Mbps	5GHz: 867Mbps
LAN Interface	GbE x 2	GbE x 1	GbE x 2	GbE x 2	GbE x 2
Power Input/Output	Power In: PoE 802.3at; DC12V/4A PoE Out: PoE 802.3af	Power In: PoE 802.3at	Power In: PoE 802.3at PoE Out: 802.3af	Power In: PoE 802.3at PoE Out: 802.3af	Passive PoE Input PoE Out
Power Consumption (Max.)	15W	22W	15W	15W	10.6W
No. of SSID	16+16	16+16	16+16	16+16	16
Concurrent Clients	2.4GHz:50; 5GHz:50	2.4GHz:50; 5GHz:50	2.4GHz:100; 5GHz:100	2.4GHz:100; 5GHz:100	5GHz:50
802.11 r /k Roaming	v	v	v	v	v
Beamforming / AirTime Fairness	-	-	v	v	-
Mode	<ul style="list-style-type: none"> <li>Standalone AP mode</li> <li>Master AP mode: Manage 16 APs</li> <li>Managed AP mode: Be managed by CAP/WAP series /OAP1750 Master AP with NMS &amp; APC500</li> </ul>	<ul style="list-style-type: none"> <li>Standalone AP mode</li> <li>Master AP mode: Manage 16 APs</li> <li>Managed AP mode: Be managed by CAP/WAP series /OAP1750 Master AP with NMS &amp; APC500</li> </ul>	<ul style="list-style-type: none"> <li>Standalone AP mode</li> <li>Managed AP mode: Be managed by CAP/WAP series /OAP1750 Master AP with NMS &amp; APC500</li> </ul>	<ul style="list-style-type: none"> <li>Standalone AP mode</li> <li>Managed AP mode: Be managed by CAP/WAP series /OAP1750 Master AP with NMS &amp; APC500</li> </ul>	<ul style="list-style-type: none"> <li>Standalone AP mode</li> <li>Managed AP mode: Be managed by CAP/WAP series /OAP1750 Master AP with NMS &amp; APC500</li> </ul>

# Choice of Wi-Fi Network Management

## For Edimax Pro Series Access Points

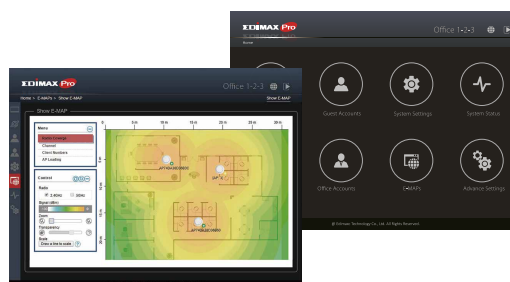
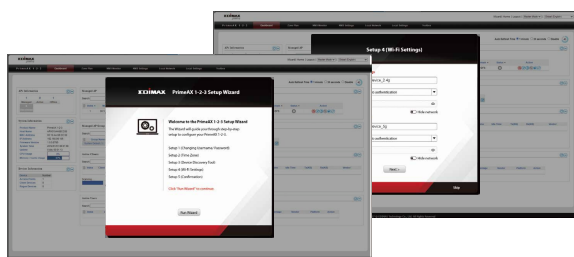
Edimax Pro NMS (Network Management Suite) is a web-based wireless network management system built-in Edimax Pro access point (CAX, CAP, WAP series and OPA1750) and AP Controller (APC500).

- **Expanded & Flexible Management:** Free, integrated controller software NMS for up to 8/16 (CAX/CAP/WAP series, OAP1750) or 200 (APC500) APs
- **Free of License Charge:** No additional AP license required
- **Multiple SSIDs:** Up to 32 SSIDs (16 x 2.4GHz & 16 x 5GHz) per access point
- **Zones Plan & Google Maps:** Intuitive indoor/outdoor AP management
- **Guest Captive Portal:** Customized login landing page
- **Guest Ticket:** Hotspot dynamic account to allow temporary Wi-Fi access
- **SMS Authentication:** SMS login (project base)
- **Built-in RADIUS (AAA):** Supports authentication up to 512 user accounts
- **Supported AP Models:** Edimax Pro CAX, CAP, WAP, OAP & IAP Series



Model No.	APC500	NMS
Where to Use	For SMB/SME Level	For Small Project and Offices
Highlight	<ul style="list-style-type: none"> <li>· Manages up to 200 EDIMAX Pro APs</li> <li>· Stand-Alone Box</li> <li>· Centralized &amp; Remote Management</li> <li>· Support Gigabit Ports and USB 3.0</li> <li>· Built-in Radius Server</li> </ul>	<ul style="list-style-type: none"> <li>· Manages up to 8 or 16 Edimax Pro APs (One Master AP Manages Other APs)</li> <li>· Free, Built-in with EDIMAX Pro CAP/WAP/CAX Series and OAP1750 AP</li> <li>· AP Array Architecture</li> <li>· Built-in Radius Server, No Need for Extra Server and Hardware Controller</li> </ul>
Applied Models	All EDIMAX Pro APs (except PrimeAX 1-2-3 & Office 1-2-3 series)	All EDIMAX Pro APs (Built-in with CAP/WAP/CAX series and OAP1750 APs)

# Wi-Fi System Network Management



Model No.	PrimeAX 1-2-3	OFFICE 1-2-3
Where to Use	For offices, schools, hotels, hospitals, retail shops or shopping malls with High-Speed	For Small Business and Offices
Highlight	<ul style="list-style-type: none"> <li>· Managed up to 16 PrimeAX 1-2-3 series APs (One Master AP Manages Other APs)</li> <li>· Free, Built-in with PrimeAX 1-2-3 series AP</li> </ul>	<ul style="list-style-type: none"> <li>· Manages up to 16 Office 1-2-3 series APs (One Master AP Manages Other APs)</li> <li>· Free, Built-in with Office 1-2-3 series AP.</li> </ul>
Applied Models	All PrimeAX 1-2-3 series APs Only	All Office 1-2-3 series APs Only



**Edimax Technology Co., Ltd.**

No. 278, Xinhua 1st Rd., Neihu Dist.,  
Taipei City, Taiwan  
Email: [sales@edimax.com.tw](mailto:sales@edimax.com.tw)

**Edimax Technology Europe B.V.**

Fijenhof 2, 5652 AE Eindhoven,  
The Netherlands  
Email: [sales@edimax.nl](mailto:sales@edimax.nl)

**Edimax Computer Company**

530 Technology Drive Suite 100, Irvine,  
CA 92618, USA  
Email: [sales@edimax.com](mailto:sales@edimax.com)

Maximum performance, actual data rates and coverage will vary depending on network conditions and environmental factors. Product specifications and design are subject to change without notice.